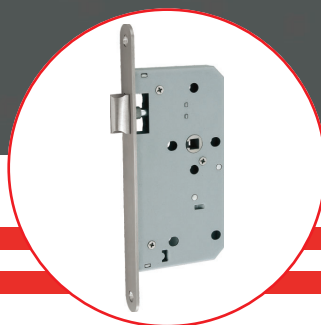
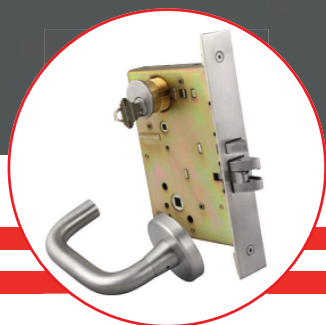


PRODUCTS CATALOGUE



SPECIFICATION DOOR HARDWARE





ABOUT UNIVERSAL LEVERS & LOCKS

UNIVERSAL LEVER & LOCKS is a technology driven Architectural Door Hardware Brand that is committed to bring safety, security, convenience and aesthetics to any built environment. Trustworthy Quality combined with affordability characterizes **Universal Levers and Locks**.

ULL offers various door hanging, door securing, door controlling and door protecting solutions with its wide range of products manufactured in strict compliance with ANSI/BHMA standards. Finest material, advanced manufacturing techniques, and focus on continuous improvement is the secret of the unmatched reliability offered by **ULL** products.

Our products, in addition to complying with the highest standards of quality, safety, design and functionality are augmented with efficient pre-sales support and after sales service. At **ULL**, we pay special attention to the needs of our customers, our pre-sales and technical support team is well equipped to assist you with the smallest detail or the most difficult application when it comes to architectural door hardware solutions.

From the design stage to installation and beyond, our solutions form a total offering for the architectural door hardware requirements of your project.

Vision

To provide visionary leadership and management expertise to global companies operating in the Door and Door Hardware industry, by providing them with manufacturing services and certified technical support for their operations in the region.

MISSION

To advise and guide end-users and their management through development of innovative and certified (own branded) product portfolio, thereby Enabling Value to them.

CORE VALUES

01. VISIONARY
02. INTEGRITY
03. PASSION
04. RECOGNITION
05. ASTUTENESS
06. COMMITMENT





AMERICAN PRODUCTS





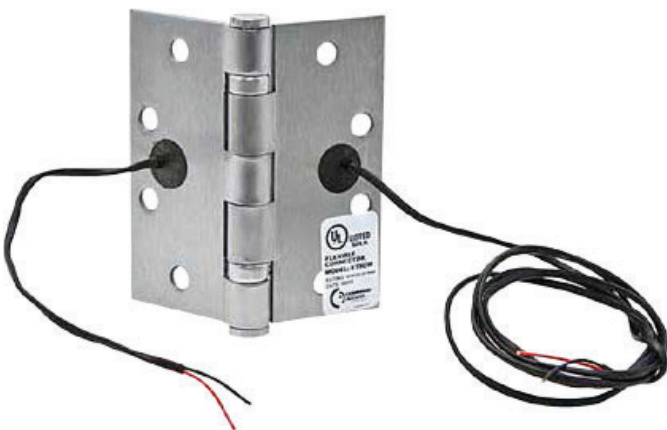




5 knuckle - 4 Ball Bearing Hinges
ANSI/BHMA GRADE 1
U1060 size: 4.5" x 4" x 4.6 mm
U1070 size: 4.5" x 4.5" x 4.6 mm
Option - Non Removable Pin (NRP)



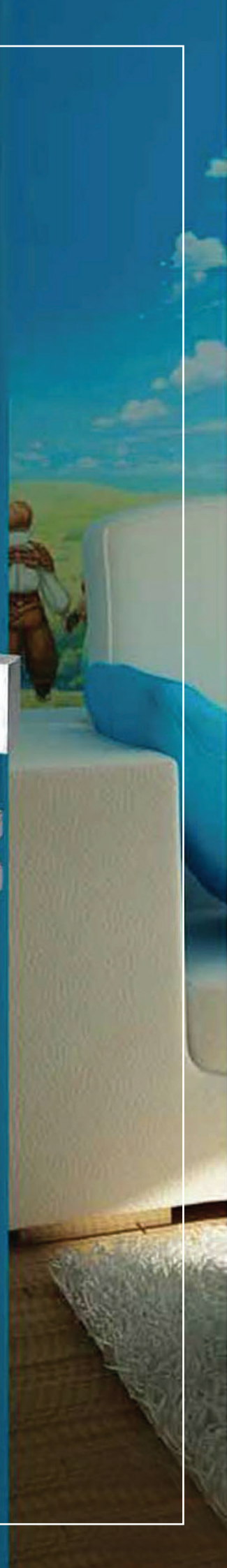
5 knuckle - 2 Ball bearing hinges
ANSI/BHMA
U1040 size: 4.5" x 4" x 3.4 mm
U1050 size: 4.5" x 4.5" x 3.4 mm
Option - Non Removable Pin (NRP)



5 knuckle - 2 Ball bearing
UL CERTIFIED Electrified Hinge
4.5" x 4" x 4.6 mm
4.5" x 4.5" x 4.6 mm
Option - All models available



3 Knuckle
2 Anti Friction Bearing Hinges
Single Action Spring Hinge
ANSI/BHMI Standard
U1015 size: 4.5" x 4.5" x 3.4 mm





MORTISE LOCKSETS

Model# U2000 SERIES

ANSI/BHMA Grade 1

All Functions Available

Door Thickness:

1-3/8" (35 mm) to 2-1/2" (64 mm)



CYLINDRICAL LOCKSETS

MODEL# U2100 SERIES

ANSI/BHMA Grade 1

U2100K - Cylindrical Lockset w/Knob

U2100L - Cylindrical Lockset w/Lever



AUXILIARY LOCKS (Deadbolts)

Model# U2200 Series


CONVENTIONAL CYLINDER

ULL 2310 offers a range of mortise cylinders in ANSI standard suitable for multiple level master keying, without cross keying.

Material : Brass, Bronze

Standard keyway : SC Keyway

Standard length : 29 mm (1-1/8"). Other sizes available on request

Number of Pins : 6 Pins

Certifications : Meet ANSI/BHMA requirements of ANSI A156.5-2001


SMALL FORMAT INTERCHANGEABLE CORE (SFIC)

ULL 2310 offers a range of mortise cylinders in ANSI standard suitable for multiple level master keying, without cross keying.

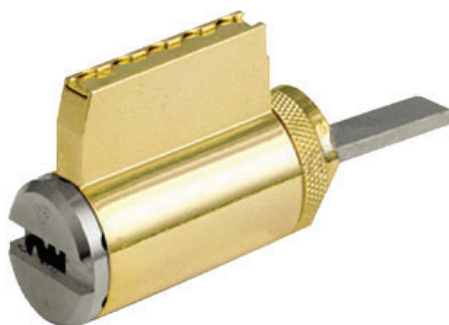
Material : Brass, Bronze

Standard keyway : SC Keyway

Standard length : 29 mm (1-1/8"). Other sizes are available on request

Number of Pins : 7 Pins

Certifications : Meet ANSI/BHMA requirements of ANSI A156.5-2001


KEY IN KNOB / LEVER CYLINDER

ULL U2340/2350 offers a range of key in knob / key in lever non IC core cylinders in ANSI standard suitable for multiple level master keying, without cross keying.

Material : Brass or Bronze

Standard keyway : SC Keyway

Standard length : 29 mm (1-1/8"). Other sizes are available on request

Number of Pins : 5 Pins



RIM CYLINDER - HOUSING

ULL 2332 offers a range of rim type SFIC Housings in ANSI standard.

- Material : Solid Brass
- Standard length : 29 mm (1-1/8"). Other sizes are available on request
- Compatibility : Compatible with cores from international manufacturers
Accommodates 6 and 7 pin cores (SFIC)
- Certifications : Meet ANSI/BHMA requirements of ANSI A156.5-2001



RIM CYLINDER

ULL 2320 offers a range of rim cylinders in ANSI standard suitable for multiple level master keying, without cross keying.

- Material : Brass
- Standard keyway : SC Keyway
- Number of Pins : 6/7 Pins
- Certifications : Meet ANSI/BHMA requirements of ANSI A156.5-2001



SFIC - HOUSING

ULL 2331 offers a range of mortise SFIC Housings in ANSI standard suitable for various types of IC Cores . The solid brass construction provides extra reliability and removable design allows changing of cams

- Material : Solid Brass
- Thread : 32 per inch
- Standard length : 29 mm (1-1/8"). Other sizes are available on request
- Compatibility : Compatible with cores from international manufacturers
Accommodates 6 and 7 pin cores (SFIC)
- Certifications : Meet ANSI/BHMA requirements of ANSI A156.5-2001





HEAVY DUTY DOOR CLOSER
U3030 Surface Mounted
Adjustable Power (Size 1-6)



HEAVY DUTY DOOR CLOSER
U3020 Surface Mounted
Adjustable Power (Size 1-6)



LIGHT DUTY DOOR CLOSER
U3010 Surface Mounted
Fixed Power Size 4



MEDIUM DUTY DOOR CLOSER
U3100 Concealed Type
Power Adjustable (Size: 1-4)





Narrow Stile - ANSI/BHMA Grade 1
Rim Type Exit Device
U 4300 Series



Wide Stile - ANSI/BHMA Grade 1
Surface Vertical Rod Exit Device
U 4200 Series



Mortise Type Exit Device
ANSI/BHMA Grade 1
U 4230 Series



Electrified Delayed Egress Feature
Alarm Feature
U 4000 Series



U 4T TP
External Thump piece



U 4T LE 01
External Trim



U 4T LE 08
External Trim

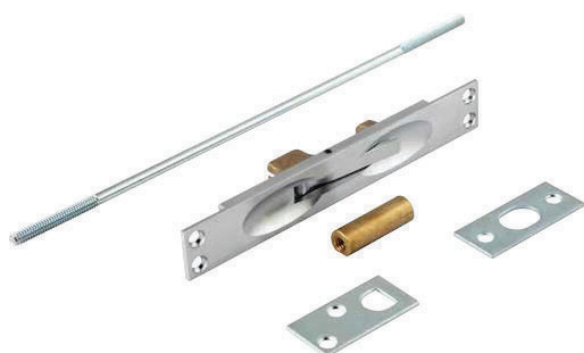




U 91 10 Manual Flush Bolt
for wooden door

U 91 60 Automatic Flush Bolt
for metal door

U 91 50 Automatic Flush Bolt
for wooden door



U 91 10 MD Manual Flush Bolt
for metal door



U 9020 Floor mounted door stop



U 9140 Kick down door holder



U 9020
Wall Door Stop

U 9010
Convex Wall Door Stop



U 9120
Dust Proof socket



U 9310
Gravity Type Door Coordinator



U 9410
Metal door Silencer



EUROPEAN PRODUCTS





BS EN CE







Euro Profile Ball Bearing Butt Hinges

HOW TO ORDER

PART	# DESCRIPTION
U-1010E-2BB-SS304	4" x 3" x 3mm - 2 Ball Bearing Hinge
U-1020E-2BB-SS304	4" x 3.5" x 3mm - 2 Ball Bearing Hinge
U-1030E-2BB-SS304	4" x 4" x 3mm - 2 Ball Bearing Hinge





U 72 Z 55 R 22
Europe Standard
Mortise Sash Lock



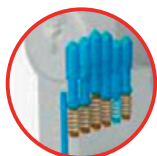
U 72 ZD 55 R 22
Europe Standard
Dead Lock



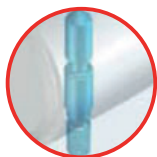
U 72 ZL 55 R 22
Europe Standard
Mortise Latch Lock

Available in Round (R) & Square Forend

U-CY400 CYLINDERS



Drill Resistance



Bumping Resistance



Cylinder Security : Attack Resistance

- High resistance to bumping or percussion
- High resistance to housebreaking technique - highly effective against wax impression burglary
- Highly drill-resistant, thanks to the hardened steel key bitting system
- Push-resistant through the projecting cam

Key Security : Key-related Security

- Key protected by 3D Trademark for effective protection from illegal key duplication
- Security Card for authorized key duplication by ULL or ULL authorized centers
- Over 140,000 possible combinations or different keys

Master Keying Potential

The 6-pin key bitting system offers outstanding access management possibilities. Eg.: 15,000 different cylinders for one master key.

Reliability : Durability

Tested for more than 100,000 cycles.

Certifications

Compliant with the European Standard EN 1303:2005

Patents

Key blank protected by 3D Trademark no. 248 236 1 and Community Design no. 2669630

Applications

U-CY400 is the product for medium-security applications ideal for apartment buildings. It offers satisfactory master keying potential for companies, shopping malls, universities, hospitals combining strong access management possibilities with control of key duplication.

Technical Features : Cylinder

- 6 pin key biting system • Brass body • Brass plugs • Self-lubricating DIN sintered steel cam
- Cemented steel pins • Variable shape hardened steel pin drivers • Phosphorous bronze and steel springs

Key

- Paracentral keyway • Nickel Silver • Ergonomic grip head • Neck length 12 mm • Key numerical coding
- Key thickness 2.4 mm • Depth 0.48 mm

Finishes

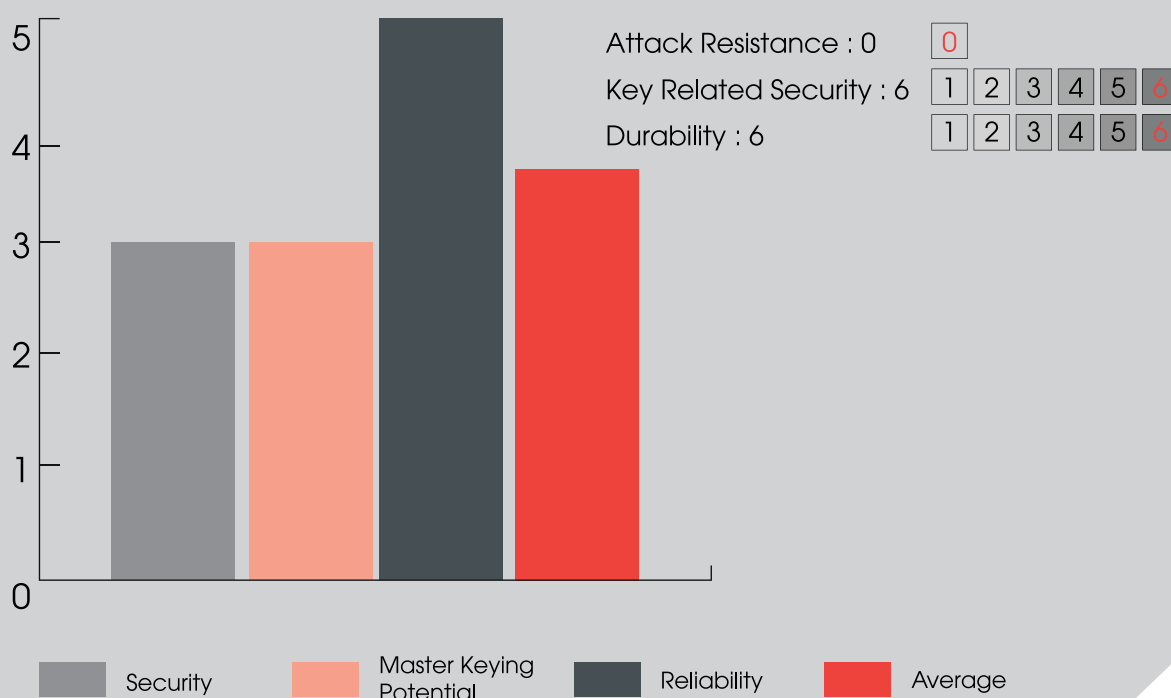
- Standard: Nickel plated brass (fin. 12) • On request: Sanded brass (fin.00)

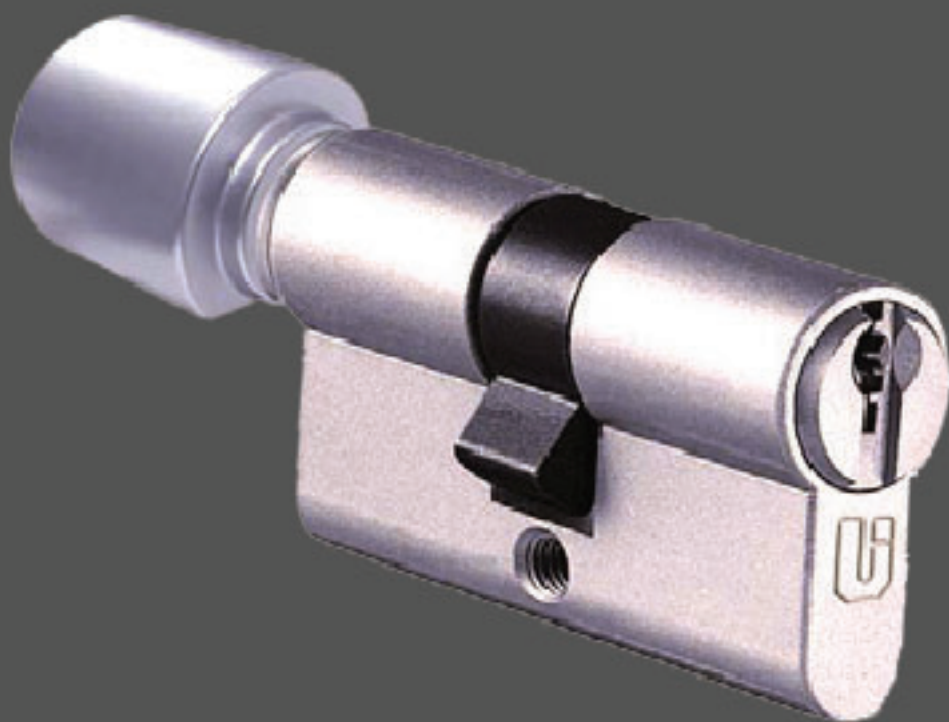
Options on Request

- KA, MK, GGMK, etc.

Standard Equipment

- 3 Keys • Fixing Screw







ULL® U-CY401 Single Cylinder

Construction

Cylinder Housing	Brass
Cylinder Plug	Brass
Number of Pins	6

Finishes Available

Satin Nickel Plated Brass (fin. 12)
Special Finish On Request
Satin & Polished Brass.



ULL® U-CY402 Double Cylinder

Construction

Cylinder Housing	Brass
Cylinder Plug	Brass
Number of Pins	6

Finishes Available

Satin Nickel Plated Brass (fin. 12)
Special Finish On Request
Satin & Polished Brass.



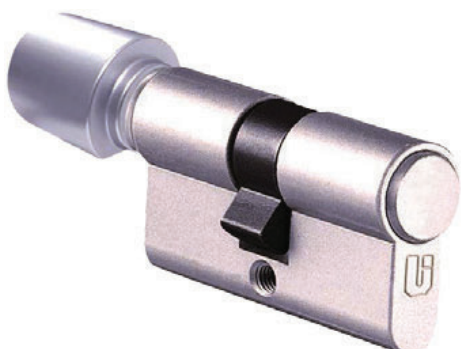
ULL® U-CY403 Thumb Turn Cylinder

Construction

Cylinder Housing	Brass
Cylinder Plug	Brass
Number of Pins	6

Finishes Available

Satin Nickel Plated Brass (fin. 12)
Special Finish On Request
Satin & Polished Brass.



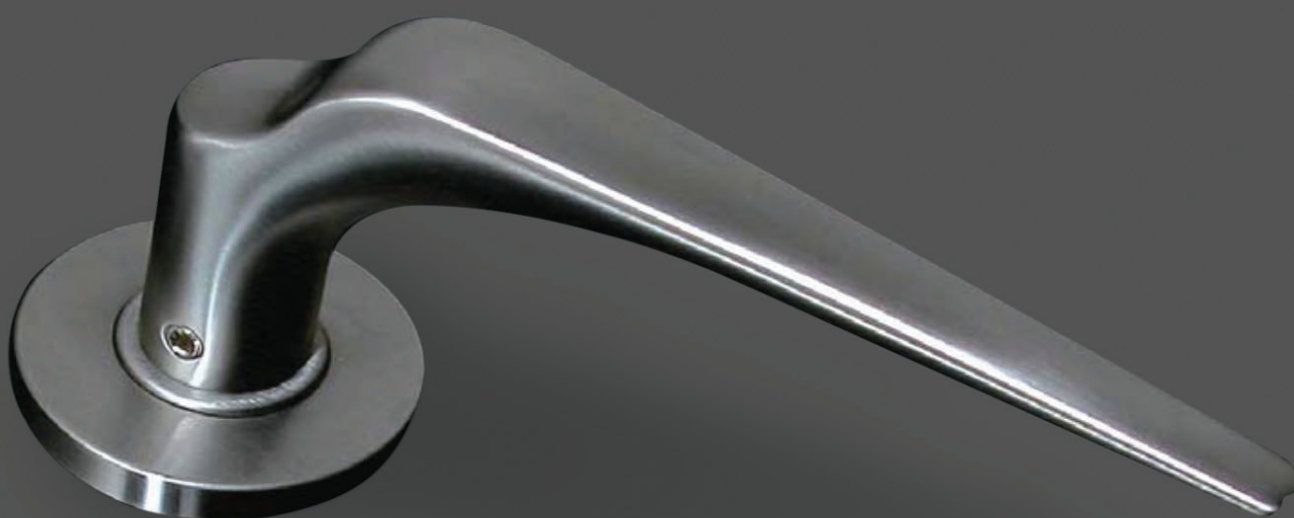
ULL® U-CY404 Privacy Cylinder

Construction

Cylinder Housing	Brass
Cylinder Plug	Brass
Number of Pins	6

Finishes Available

Satin Nickel Plated Brass (fin. 12)
Special Finish On Request
Satin & Polished Brass.





U-190.100.068

U-190.100.167

U-S190.200.021



U-190.100.070

U-190.100.171

U-190.100.075



U-190.100.045

U-190.100.967

U-190.100.168



U-S190.200.212

U-S190.200.021

U-S 490.100.045





U-T81J European
Heavy Duty Door Closer



U-T83G European
Medium Duty Door Closer



U-C68B European
Light Duty Door Closer





U-PD3010 Panic Exit Device



U-PD7570 Panic Exit Device





U - DS 001 Door Stop



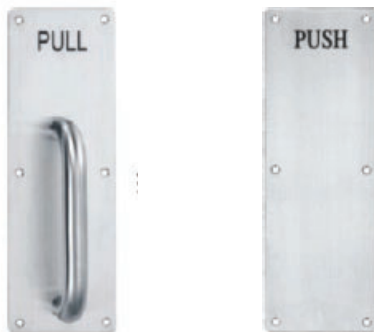
U - DS 006 Door Stop



U - DS 015 Door Stop



U - DV 001 Door Viewer



U - LH 2-4608 Pull Plate

U - LH 81B Push Plate



U 9110-MD-SCP Manual
Flush Bolt



U - SP 001 Sign Male Plate



U - SP 002 Sign Female Plate



U 9150-SCP Door Stop



U - TT 001SS Thumb
Turn Indicator



U - TT 007SS Thumb
Turn Indicator



U - DS 208 Door Stop

EXCLUSIVE AGENT



شركة تجار مواد البناء العالمية المحدودة
UNIVERSAL BUILDING MATERIALS MERCHANTS CO. LTD.

T. : +966-11-460-7553

F. : +966-11-460-8231

E. : info@ubmksa.com



TELEPHONE : +971-4-880-6266

FAX : +977-4-880-6276

EMAIL: info@ullonline.com